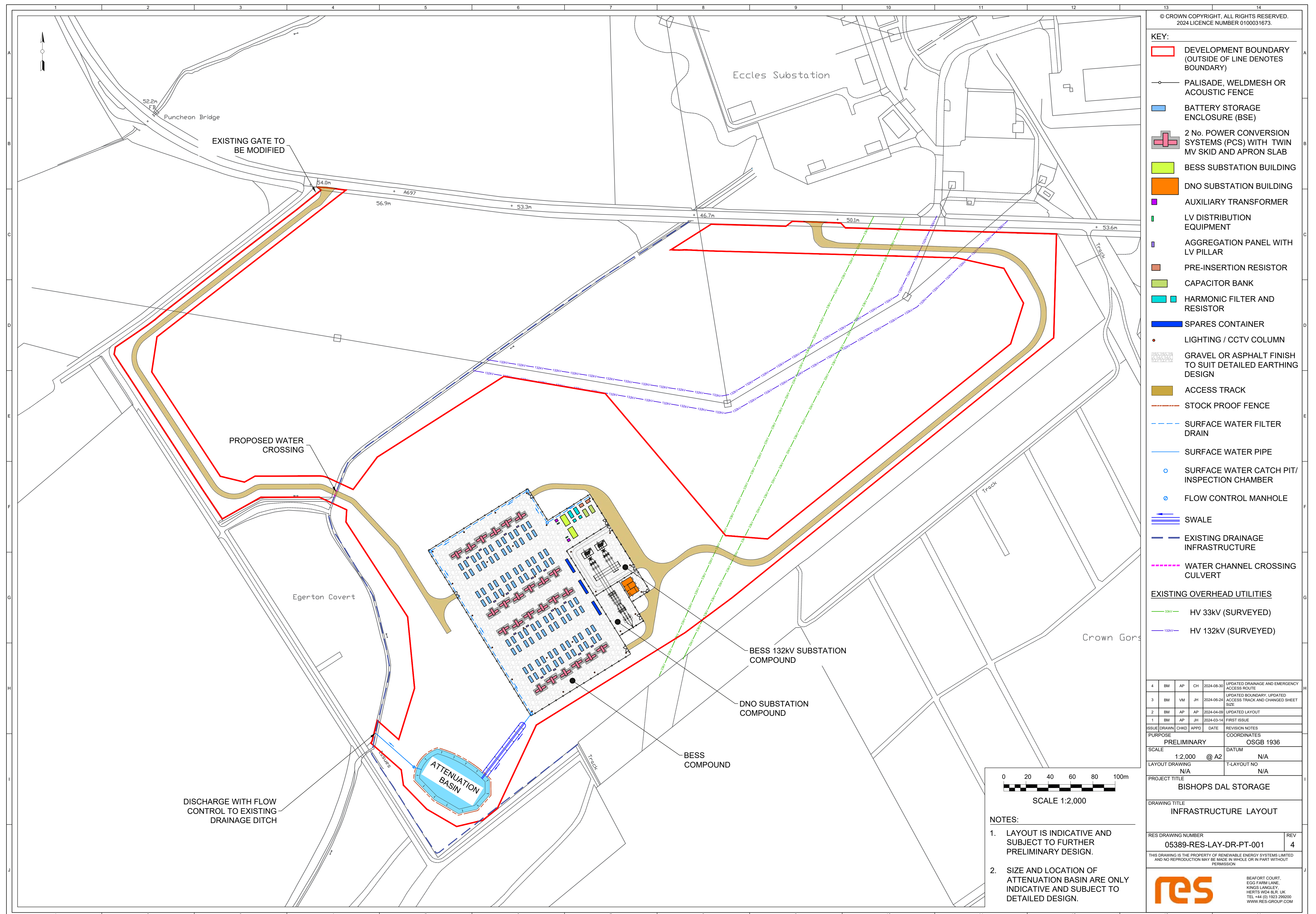


Infrastructure and layout

The plan below shows the updated layout for the Bishops Dal Energy Storage project.



Typical dimensions for the associated infrastructure are detailed below. Please note all dimensions are subject to final design.

- Battery enclosures - 6.1m long, 2.4m wide and 2.9m high
- Power Conversion Systems and Transformers – 10.3m long, 6m wide and 2.4m high
- DNO Substation – 33m long, 24m wide, highest point is 7.1m
- BESS Substation – 10m long, 5m wide and 4.5m high
- Auxiliary Transformer – 2.5m long, 2.3m wide and 2.7m high
- Grid Compliance Equipment – 6.4m long, 3.3m wide and 2.7m high
- Security System CCTV columns - up to 4m high