

Infrastructure and layout

The plan below shows the preliminary layout for the Bishops Dal Energy Storage project.

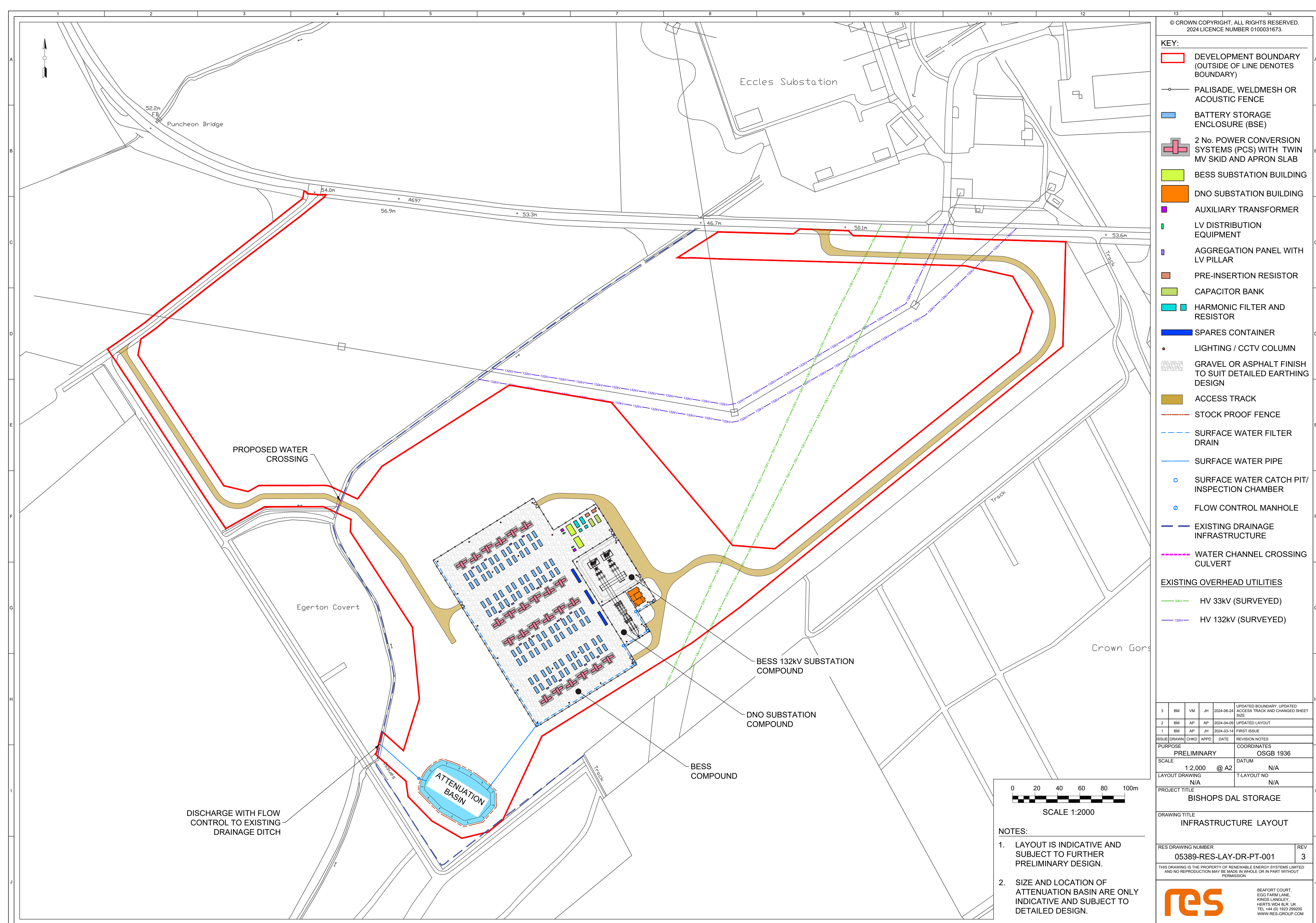
The proposed system is a containerised scheme, involving proven Lithium iron phosphate battery technology which RES has deployed at multiple projects around the world.

The site would comprise of approximately 96 battery containers which would be one of two types depending on the final choice of supplier - either shipping containers or modular battery enclosures. The typical overall size for both types of containers are approximately 6.1 metres long by 2.9 metres high.

The tallest infrastructure is expected to be the transformer which would have a maximum height of around 7 metres.

The infrastructure would include:

- Battery enclosures
- Power Conversion Systems and Transformers
- DNO Substation & grid infrastructure
- BESS Substation
- Auxiliary Transformer
- Grid Compliance Equipment
- Grid Connection Infrastructure
- Security System
- Landscaping
- Drainage Scheme



We are still consulting on the design layout and as such it is subject to change.