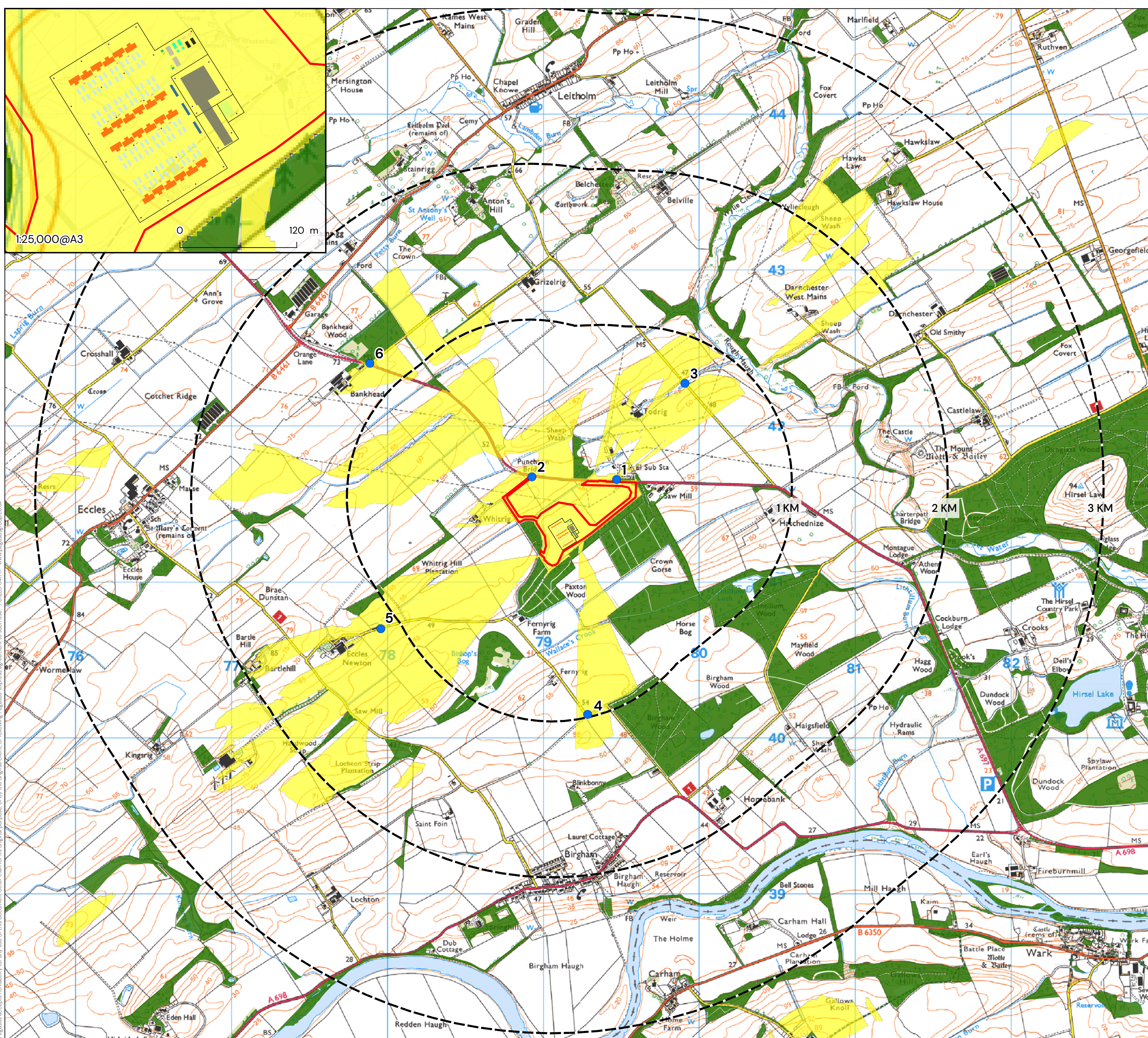


# Landscape and Visual

To help identify which landscape and visual resources may be affected by the proposed battery energy storage proposal, a computer-modelled zone of theoretical visibility (ZTV) plan has been produced, as shown below.

This illustrates the maximum theoretical area of visibility of the proposed site taking into account existing buildings and existing woodland and hedgerow. It does not consider proposed new and infill planting.



- KEY**
- Site Boundary
  - 1km, 2km and 3km Buffers
  - OS Local Buildings
  - OS Local Woodland
  - Viewpoint Location
- Site Element**
- Auxiliary Transformer (2.7m)
  - BESS Substation Building (4.5m)
  - Battery Storage Enclosure (2.9m)
  - Capacitor Tank (2.6m)
  - DNO Substation Building (3.9m)
  - Harmonic Filter and Resistor (2.7m)
  - Power Conversion Systems (2.4m)
  - Pre-Insertion Resistor (2.9m)
  - Spares Container (2.9m)
  - Substation Compound (6.8m)
  - Lighting/CCTV Column (4m)
  - LV Distribution Equipment (1.1m)
  - Aggregation Panel with LV Pillar (1.1m)
  - Palisade, Weldmesh or Acoustic Fence (3m)
  - Screened Zone of Theoretical Visibility

**Screened ZTV Production Information:**

- DTM data used in calculations is OS Terrain 5 that has been combined with OS Open Map Local data for woodland and buildings to create a Digital Surface Model (DSM).
- Indicative woodland and building heights are modelled at 15m and 8m respectively.
- Viewer height set at 1.7m (in accordance with para 6.11 of GLVIA Third Edition)
- Calculations include earth curvature and light refraction

N.B. This Zone of Theoretical Visibility (ZTV) image illustrates the theoretical extent of where the development may be visible from, assuming 100% atmospheric visibility, and includes the screening effect from vegetation and buildings, based on the assumptions stated above.

**SCREENED ZONE OF THEORETICAL VISIBILITY AND VIEWPOINT LOCATION PLAN**

**BISHOPS DAL ENERGY STORAGE**

RES LIMITED

DATE	SCALE	TEAM	APPROVED
09/08/2024	1:25,000@A3	EH	DT

SHEET	REVISION
-	E

DRAWING NUMBER  
P24\_0160\_EN\_01



A series of photomontages are available on view at today's consultation, providing projected viewpoints from three different representative locations, for the updated design.