

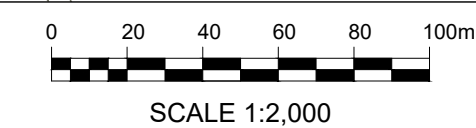
KEY:

- DEVELOPMENT BOUNDARY (OUTSIDE OF LINE DENOTES BOUNDARY)
- PALISADE, WELDMESH OR ACOUSTIC FENCE
- BATTERY STORAGE ENCLOSURE (BSE)
- 2 No. POWER CONVERSION SYSTEMS (PCS) WITH TWIN MV SKID AND APRON SLAB
- BESS SUBSTATION BUILDING
- DNO SUBSTATION BUILDING
- AUXILIARY TRANSFORMER
- LV SWITCHGEAR ROOM
- AGGREGATION PANEL WITH LV PILLAR
- PRE-INSERTION RESISTOR
- CAPACITOR BANK
- HARMONIC FILTER AND RESISTOR
- SPARES CONTAINER
- LIGHTING / CCTV COLUMN
- GRAVEL OR ASPHALT FINISH TO SUIT DETAILED EARTHING DESIGN
- ACCESS TRACK
- EMERGENCY ACCESS TRACK
- STOCK PROOF FENCE
- SURFACE WATER FILTER DRAIN
- SURFACE WATER PIPE
- SURFACE WATER CATCH PIT/ INSPECTION CHAMBER
- FLOW CONTROL MANHOLE
- SWALE
- EXISTING DRAINAGE INFRASTRUCTURE
- WATER CHANNEL CROSSING CULVERT
- GATE

CONTINUED...

6	BM	AP	JH	2024-11-26	UPDATED DEVELOPMENT BOUNDARY AND ACCESS TRACK
5	BM	AP	JH	2024-10-29	UPDATED ACCESS TRACK, DEVELOPMENT BOUNDARY AND LAYOUT
4	BM	AP	CH	2024-08-30	UPDATED DRAINAGE AND EMERGENCY ACCESS ROUTE
3	BM	VM	JH	2024-06-24	UPDATED BOUNDARY, UPDATED ACCESS TRACK AND CHANGED SHEET SIZE
ISSUE/DRAWN					REVISION NOTES
PURPOSE					COORDINATES
PLANNING					OSGB 1936
SCALE					DATUM
1:2,000 @ A2					N/A
LAYOUT DRAWING					T-LAYOUT NO
N/A					N/A
PROJECT TITLE					
BISHOPS DAL STORAGE					

DRAWING TITLE	
INFRASTRUCTURE LAYOUT	
RES DRAWING NUMBER	REV
05389-RES-LAY-DR-PT-001	6
THIS DRAWING IS THE PROPERTY OF RENEWABLE ENERGY SYSTEMS LIMITED AND NO REPRODUCTION MAY BE MADE IN WHOLE OR IN PART WITHOUT PERMISSION	



KEY:

- EXISTING OVERHEAD UTILITIES**
- 11kV HV 11kV (SURVEYED)
 - 33kV HV 33kV (SURVEYED)
 - 132kV HV 132kV (SURVEYED)

NOTES:

- LAYOUT IS INDICATIVE AND SUBJECT TO FURTHER DETAILED DESIGN.
- SIZE AND LOCATION OF ATTENUATION BASIN ARE ONLY INDICATIVE AND SUBJECT TO DETAILED DESIGN.

